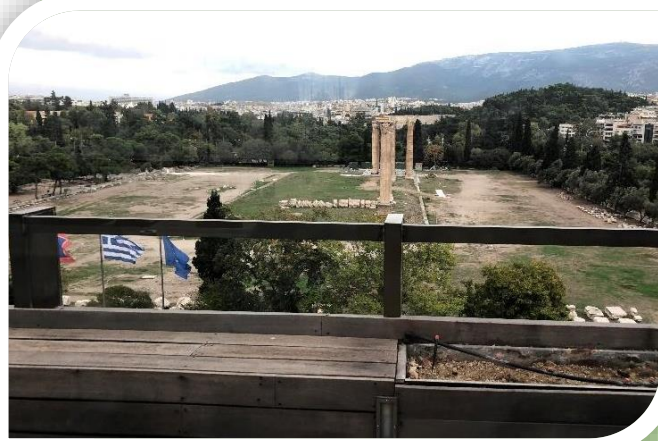




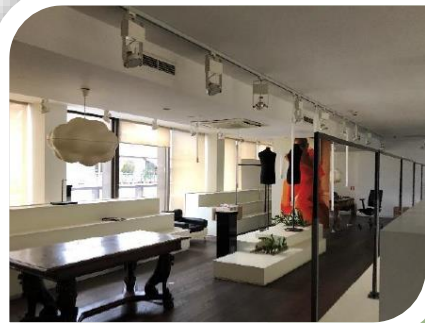
Self-contained Office Building in Prime Location for Rent
6 Syngrou ave, Athens

- Property benefits from abundant natural sunlight & panoramic views onto key city historic landmarks
- 740 sq m site surface
- 1,780 sq m over 8 levels above ground
- 235 sq m in basement



- The property is located directly opposite the Temple of Olympian Zeus, thus boasting outstanding vistas onto the site. In addition, top floor offers views onto the Acropolis
- The building benefits from suspended ceilings, movable partitions, glazed doors, independent heating/ cooling system with pumps installed on the roof terrace, alarm system, smoke detectors and structured cabling
- The property is easily accessible as it is only 270 m from Acropolis metro station and 800 m from Syntagma sq & metro station

EER: D



Level	Surface (sq m)
Basement	234.17
Ground floor	245.60
Mezzanine	122.80
1 st floor	307.80
2 nd floor	307.80
3 rd floor	307.80
4 th floor	263.05
5 th floor	170.80
6 th floor	61.73
Total above ground	1,787.38
Grand Total	2,021.55

Contact: **George Tassopoulos** | +30 210 3600 172, +30 6955669452
g_tassopoulos@athenseconomics.gr
 JLL – Athens Economics, 10 Mourouzi st, 10674 Athens www.athenseconomics.gr

